



## Local Government Academy

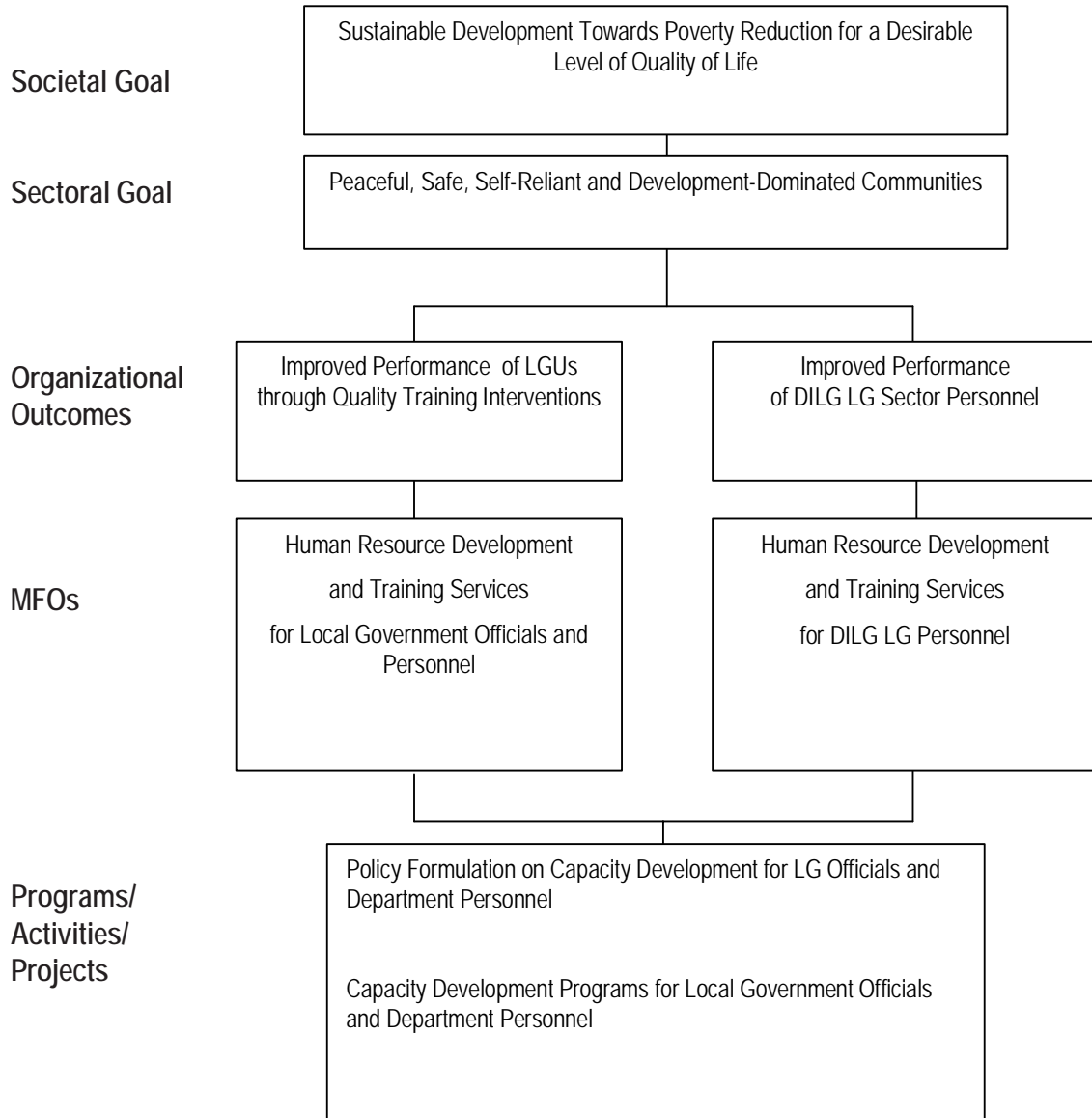
### Legal Basis

**Executive Order No. 262** (July 25, 1987) established in the Department of Local Government (now the Department of the Interior and Local Government) a Local Government Academy responsible for human resource development and training of local government officials and department personnel.

### Mandate

The Local Government Academy (LGA) is responsible for the human resource development and training of local government officials and personnel of the Department of the Interior and Local Government, the Local Government Bureaus, and Regional Field Offices.

## LOGICAL FRAMEWORK (LGA)



**PERFORMANCE MEASURES AND TARGETS**  
(Amounts in Thousand Pesos)

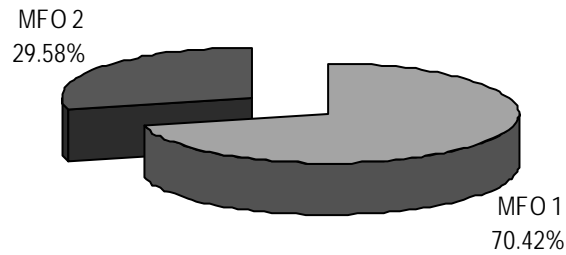
Particulars	FY 2008	FY 2009	FY 2010
	Actual/Amount	Target/Amount	Target/Amount
<b>MFO 1</b> <b>Human Resource Development and Training Services for Local Government Officials and Personnel</b>	<b>85,686</b>	<b>59,656</b>	<b>60,844</b>
% of LGUs with competency profiles prepared and updated: Province (80), Cities (136), Municipalities (1,494) Barangays (41,994)	160% 1,296/811	100% 496	100% 1,076
% of LGUs that undertook initiatives to improve capacities along the five areas of LGPMS (GASEE)	26% of the total number of provinces	20% of 80 provinces	20% of 80 provinces
No. of training modules developed and updated	11 developed; 7 updated	4 developed; 5 updated	5 updated
<b>MFO 2</b> <b>Human Resource Development and Training Services for DILG LG Personnel</b>	<b>33,323</b>	<b>25,566</b>	<b>25,554</b>
Number of HRD Plan and Policy formulated/updated	on-going formulation	on-going formulation	1 plan formulated
Number of Training Modules updated	3	1	2
No. of DILG Personnel trained	857	495	500
<b>TOTAL</b>	<b>119,009</b>	<b>85,222</b>	<b>86,398</b>

## FY 2010 MFO Budget

By MFO/By Expense  
(In thousand pesos)

Particulars	PS	MOOE	TOTAL	% Share
<b>MFO 1</b> Human Resource Development and Training Services for Local Government Officials and Personnel	9,654	51,190	60,844	70.42%
<b>MFO 2</b> Human Resource Development and Training Services for DILG LG Personnel	4,137	21,417	25,554	29.58%
<b>TOTAL</b>	<u>13,791</u>	<u>72,607</u>	<u>86,398</u>	100%
<b>% Share</b>	15.96%	84.04%	100%	

**By MFO**  
(Total Budget = P86,398,000)



**By Expense Class**  
(Total Budget = P86,398,000)

